



**NEW MEXICO
BEHAVIORAL HEALTH
COLLABORATIVE**
PROGRESS OF TRANSFORMATION

December 2007

www.bhc.state.nm.us



Background

- 2002 Needs & Gaps Analysis of the Behavioral Health Service System in NM
- On September 12, 2003, Governor Bill Richardson directed all agencies tasked with the delivery, funding, or oversight of behavioral health care services (defined as mental health and substance abuse services and treatment) in New Mexico, to work collaboratively to create and purchase a single behavioral health service delivery system throughout New Mexico, focused on the improvement and coordination of service provision and delivery.



- In the 2004 session of the New Mexico Legislature, a bill was passed and signed into law creating an Interdepartmental Behavioral Health Purchasing Collaborative (the Collaborative)



VISION: A single BH delivery system in which:

- 1. Support of recovery and resiliency is expected**
- 2. Behavioral health is promoted**
- 3. Adverse effects of substance abuse and mental illness are prevented or reduced**
- 4. Individuals & families with BH needs are assisted in participating fully in the life of their communities**
- 5. Available funds are managed effectively and efficiently**



The charge to the Collaborative in the law is:

- 1. Identify behavioral health needs statewide**
- 2. Develop a master plan for statewide delivery of services**
- 3. Address regional differences, including cultural, rural, frontier, urban and border issues**
- 4. Inventory all expenditures for behavioral health, mental health and substance abuse services;**
- 5. Plan, design and direct a statewide behavioral health system, ensuring both availability of services and efficient use of *all* behavioral health funding and**
- 6. Contract for operation of one or more behavioral health entities to ensure availability of services statewide**



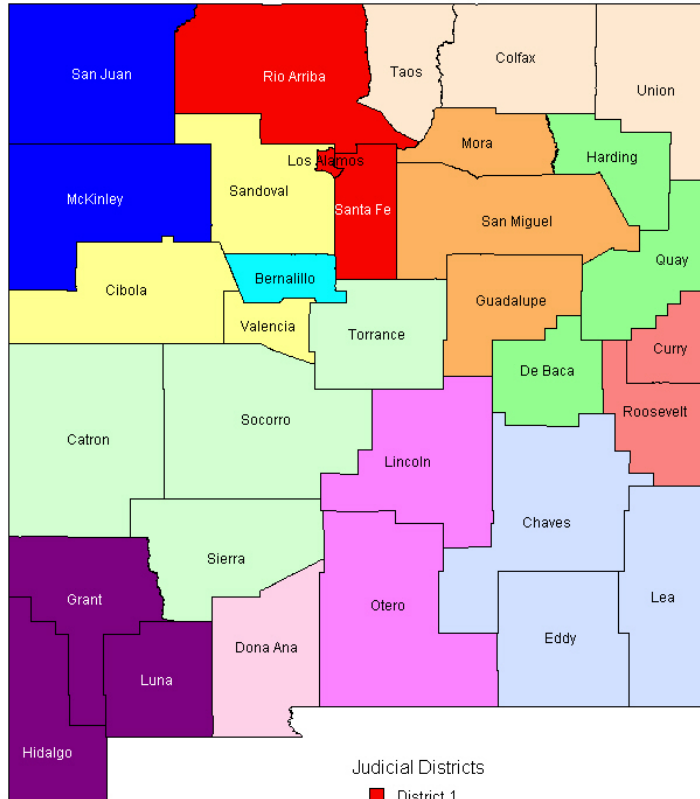
Transformation Structure

- NM Behavioral Health Purchasing Collaborative-17 state agencies and boards
- Statewide Entity-ValueOptions New Mexico
- Local Collaboratives
- Behavioral Health Planning Council

The 17 State Agencies Are:

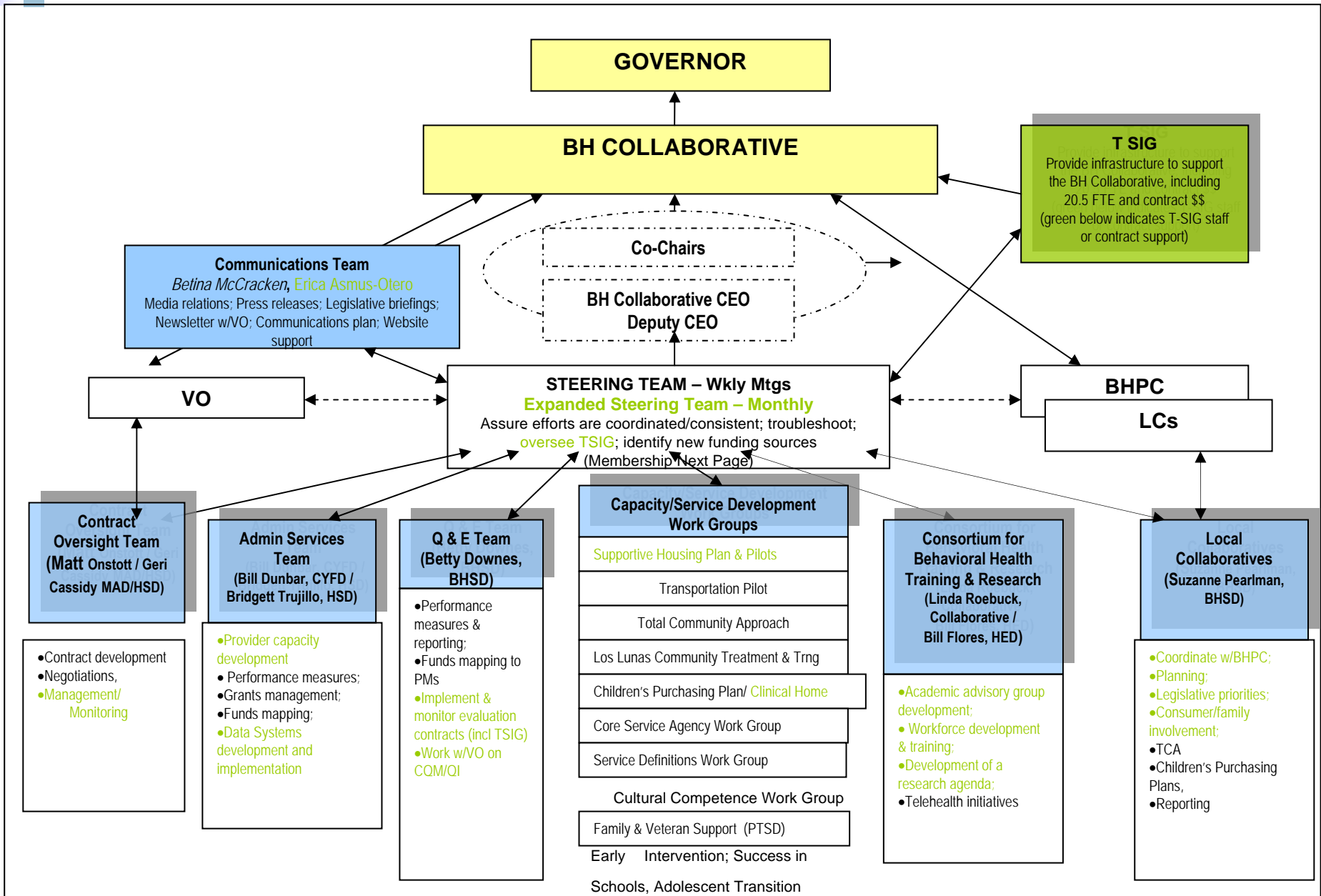
- ❖ Human Services
- ❖ Aging & Long Term Services
- ❖ Children, Youth & Families
- ❖ Department of Health
- ❖ Corrections
- ❖ Public Education
- ❖ Transportation
- ❖ Finance & Administration
- ❖ Indian Affairs
- ❖ Workforce Solutions
- ❖ Division of Vocational Rehabilitation
- ❖ Administrative Office of the Courts
- ❖ Mortgage Finance Authority
- ❖ Health Policy Commission
- ❖ Developmental Disabilities Planning Council
- Governor's Commission on Disability
- Governor's Health Policy Advisor

Judicial District Map



Judicial Districts

- District 1
- District 10
- District 11
- District 12
- District 13
- District 2
- District 3
- District 4
- District 5
- District 6
- District 7
- District 8
- District 9





Successes & Opportunities of Local Collaboratives & BH Planning Council

Successes

- Coordinated Legislative Agenda
- Native American LCs
- Total Community Approach
- Consumer Engagement Plans

Opportunities

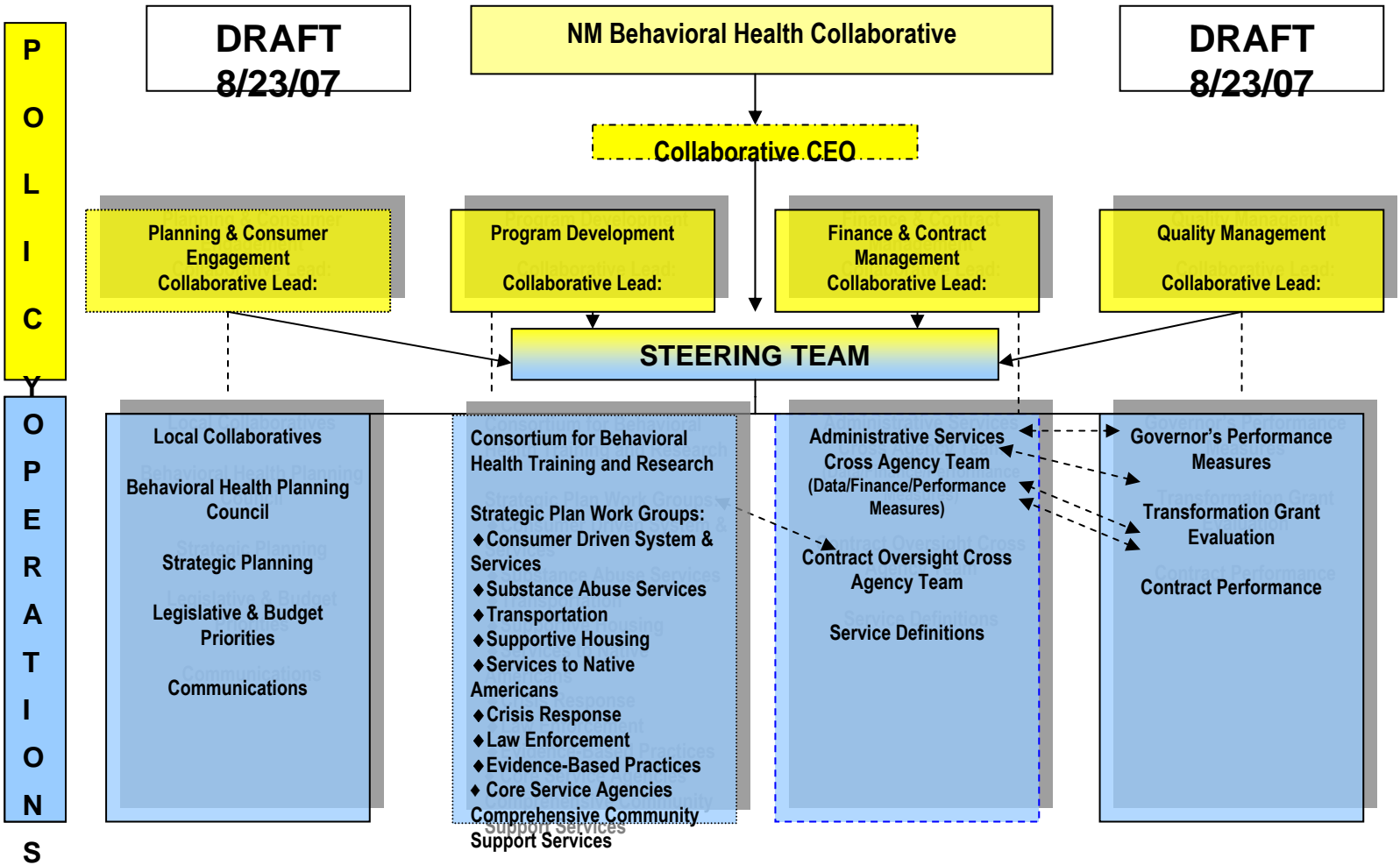
- Clarify roles and functions
- Manage expectations
- Improve Communication



2007 Key Issues

- **System Rebalance**
- **Consumer and Family Involvement**
- **Data Management**
- **Contract Management**
- **Quality Management**

Proposed New Structure





COMMUNITY BH SERVICES INFRASTRUCTURE NEEDS – 1

- **Safety Net Providers Often Serve Multiple Client Types Using Multiple Funding Streams**
- **In Recent Years, Many New Services Have Been Funded and New Requirements Imposed Without Attention to Maintaining Existing Critical Service Capacity in NM's Communities**
- **Medicaid Rates Increased in FY07 & FY08 for the First Time Since 1995**
- **Non-Medicaid Rates Have Not Increased Except Through Federal Grants & Other Non-Recurring Funds**



COMMUNITY BH SERVICES INFRASTRUCTURE NEEDS – 2

- **While State & Federal Funding Has Remained Stagnant, Costs Have Increased**
 - **Staff Salaries to Attract Workers**
 - **Healthcare Costs for Staff**
 - **Malpractice Insurance**
 - **Transportation/Travel Costs**
 - **Background Checks**
 - **Service Intensity Increases**
 - **Critical Information Technology**
 - **Licensing/Accreditation/Certification**
- **At the Same Time, Service Demand Has Increased**



COMMUNITY BH SERVICES INFRASTRUCTURE NEEDS – 3

- **Collaborative Is Working With Adult & Youth Providers to Put Together a 10- Year Funding History & Identify Funding Needs to Maintain Existing Services**
- **For FY08, Most Local Collaboratives Identified Maintenance of Existing Services as a Top Priority**
- **FY09 – Legislature Will Hear Requests to Increase Funding for Non-Medicaid Rates, especially for Children, Adults in Community Corrections, and Adults with Substance Abuse and MH Needs Who are Not Medicaid-Eligible**



EXAMPLES OF CRITICAL BEHAVIORAL HEALTH SERVICES DEVELOPMENT UNDERWAY IN NEW MEXICO



CHILDREN'S CLINICAL HOME PILOT

- **Pilot sites in three communities involving 10 providers**
- **Youth in juvenile justice detention and at risk of detention are the target population to receive services in the pilots**
- **Clinical homes are the foundation for a service delivery model that promotes family involvement, continuity of care; community support for the child and family across all services, and appropriate access to community-based and residential care**
- **Pilots are currently serving approximately 165 youth and their families**
- **Independent Evaluation of the Pilot is being conducted**
- **Findings from the pilots will be used to guide expansion and development of new services**



PTSD SERVICES FOR VETERANS

- **Work group established in February 2007 to develop behavioral health services and system model for veterans and returning military personnel from Iraq and Afghanistan**
- **Workgroup includes representatives of Veterans, NM Department of Veteran Services, VA Hospital in Albuquerque, Governor's Office, UNM HSC for Telehealth and Department of Psychiatry, Providers, Sandoval County Officials, Value Options and BHSD**
- **Model developed for community services includes: outreach, screening, early intervention, assessment and referral, crisis services, case management, treatment, use of telehealth to train and deliver services, and services to assist with employment.**
- **Services are designed to be available to the military personnel/veteran's entire family, to those that have family members serving in wars and those that have lost loved ones, including children, wives, husbands, siblings, etc.**
- **Funding appropriated to help veterans for FY 08- \$570,000**
- **Sandoval County is the site for the pilot project. Sandoval County was chosen for the development of initial services due to the presence of seven Pueblo Tribes and high presence of veterans**
- **Independent Evaluation planned and funded through the Center for Behavioral Health Training and Research**



SUPPORTIVE HOUSING PLAN

Cross Collaborative Housing Leadership Group:

- **1. Statewide needs assessment - permanent supportive housing.**
- **2. Increase the supply of affordable rental housing and other housing options for vulnerable populations**
- **3. Increase the supply of rental assistance and operating funds/entitlements that can be utilized for rental assistance.**
- **4. Effective 11/1/07- Housing First: Permanent Supportive Housing for Transition Age Youth, a Collaborative pilot program in Albuquerque**
- **5. Effective 1/1/08 – NM Linkages, a permanent supportive housing program for adults with serious and persistent mental illness, including co-occurring disorders, and homeless or precariously housed, with a 10% set-aside minimum for off-reservation Native Americans.**
- **6. Create local supportive housing partnerships and expand capacity of housing developers to create quality, affordable housing.**
- **7. Increase services resources through targeting of existing and new resources and building capacity for the delivery of housing support services.**



TOTAL COMMUNITY APPROACH (TCA) (See Tab 4)

- **Strategic response in communities w/ highest need indicators re substance abuse, esp methamphetamine – \$3 million total available**
- **Must address three components – prevention, treatment and law enforcement/courts**
- **Led by Local Collaborative & must include DWI councils, government officials, schools, community health councils, police/sheriffs, courts, practitioners, providers, consumers & their families, other community members**
- **Local Collaborative must bring something to the table and show how they will maximize state & federal resources in plans due August 29, 2007**
- **Goal will be to change the metrics/indicators that led to these communities being selected**



LOS LUNAS SUBSTANCE ABUSE TREATMENT & TRAINING FACILITY

- **Legislature Appropriated \$5 mil Capital & \$250,000 Planning in FY08 to:**
 - **Develop a Statewide, State-of-the-Art Facility for Community-Based & Residential Substance Abuse Services (Meth, Cocaine, Alcohol, Co-Occurring)**
 - **Planning Group Including Legislators, Local Prosecutor, Treatment Provider, UNM's CASA, Consumer Advisors, Local Collaborative representative, Collaborative state agency partners, Architectural Consultants, VONM, & GSD**
 - **Phase I – Renovation of a Single Building for Three Separate Intensive Outpatient (IOP) Treatment Programs for a) Women, b) Adolescents, and c) Men; Along with Workforce Training Capacity for Providers, Courts, Law Enforcement**
 - **Phase II – Renovation of 2nd Building for Residential Capacity for Women w/ Children**
 - **Phase III – Renovation of 3rd Building for Small Residential Capacity for Men**



RATE EQUALIZATION ACTIVITIES

- **Rates for Same Services Vary Significantly Across Geographic Areas and Across Funding Streams**
- **VONM Working with Collaborative Cross Agency Staff to:**
 - **Implement Medicaid Rate Increases for BH**
 - **Identify non-Medicaid Rate Increases Needed for FY09 Budget Request**
 - **Implement Move to Fee-For-Service (FFS) Billing by All Providers, as Recommended by LFC Review (Targeted for July 1, 2008)**
- **Final Sign Off on VONM Plan - July 26, 2007 Collaborative Meeting**